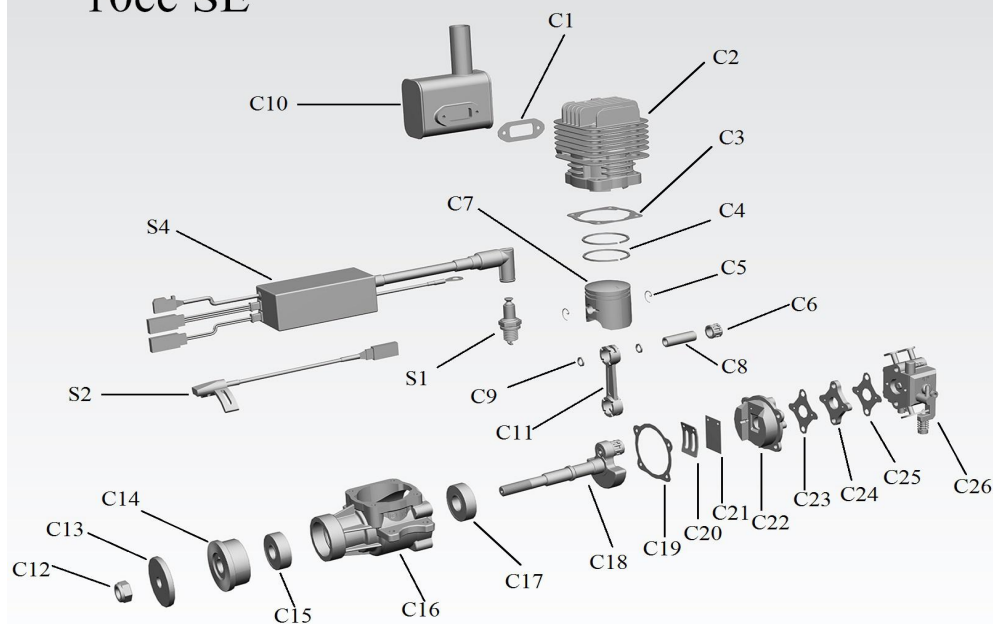


10cc SE



Item	Description	Accessory Number
1.	CYLINDER	C2
2.	CRANKSHAFTACCESSORY	C18+C11
3.	CRANKCASE SET	C16+C22
4.	PISTON ACCESSORY	C4+C5+C6+C8+C9
5.	PROP HUB ACCESSORY	C12+C13+C14
6.	BEARINGS	C15+C17
7.	IGNITION SET	S4
8.	WRIST PIN BEARING	C6
9.	REEDVALVE&INSULATOR	C24+C20+C21
10.	CARBURETOR	C26
11.	SPARK PLUG	S1
12.	MUFFLER	C10
13.	GASKET SET	C1+C3+C25+C23+C19
14.	SCREW SET	T1



Ivan Michálek-IMI

Stinger 10cc SE

Parameter:

Type : 2 cycle piston valve type gasoline engine for airplane

Piston displacement Cylinder (cc) : 10cc (.61 cu in)

Bore x Stroke (mm): 1.08 in(27.6mm) x 0.67 in (17 mm)

Carburetor : Walbro

Ignition : DC-CDI (Computer Controlled auto advance, electronic ignition system)

Power supply: 6-14V

Maximum Output :1.9HP@1.4KW

Requires: Gasoline, 2-cycle oil, ignition battery & propeller

speed rang : 2000-15000rpm

Gasoline-Version : Pre-mixed Fuel, 25-40 (Gasoline):1 , Recommend:30:1

(90% high octane unleaded gasoline, Import gas into carbon fiber installations valves)

Lubrication Oil : 2 cycle engine oil

Propeller : 13X7 9800rpm ,14X6 9000rpm (Standard Two leafs prop)

Suggested Propellers: 13X6,14X6,13X8,13X7

Suggested Break-in Prop: 14X6

Sparking plug: M8(1/4-32) Type

Cooling System : Air Cooled